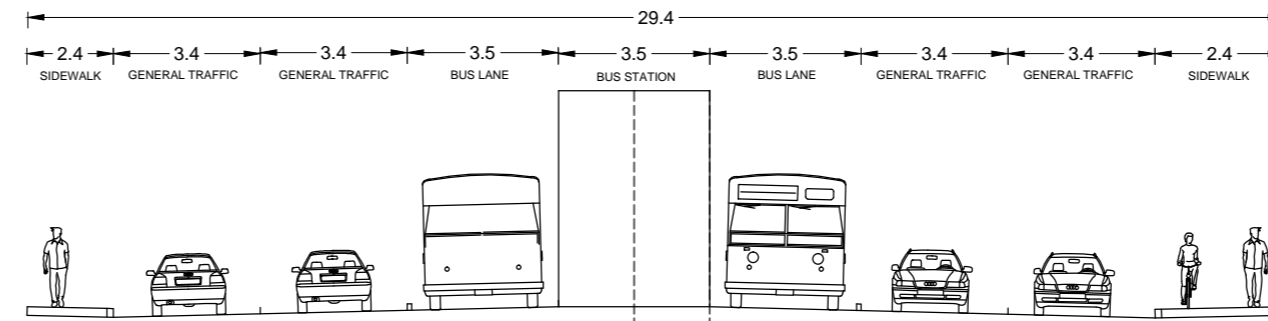
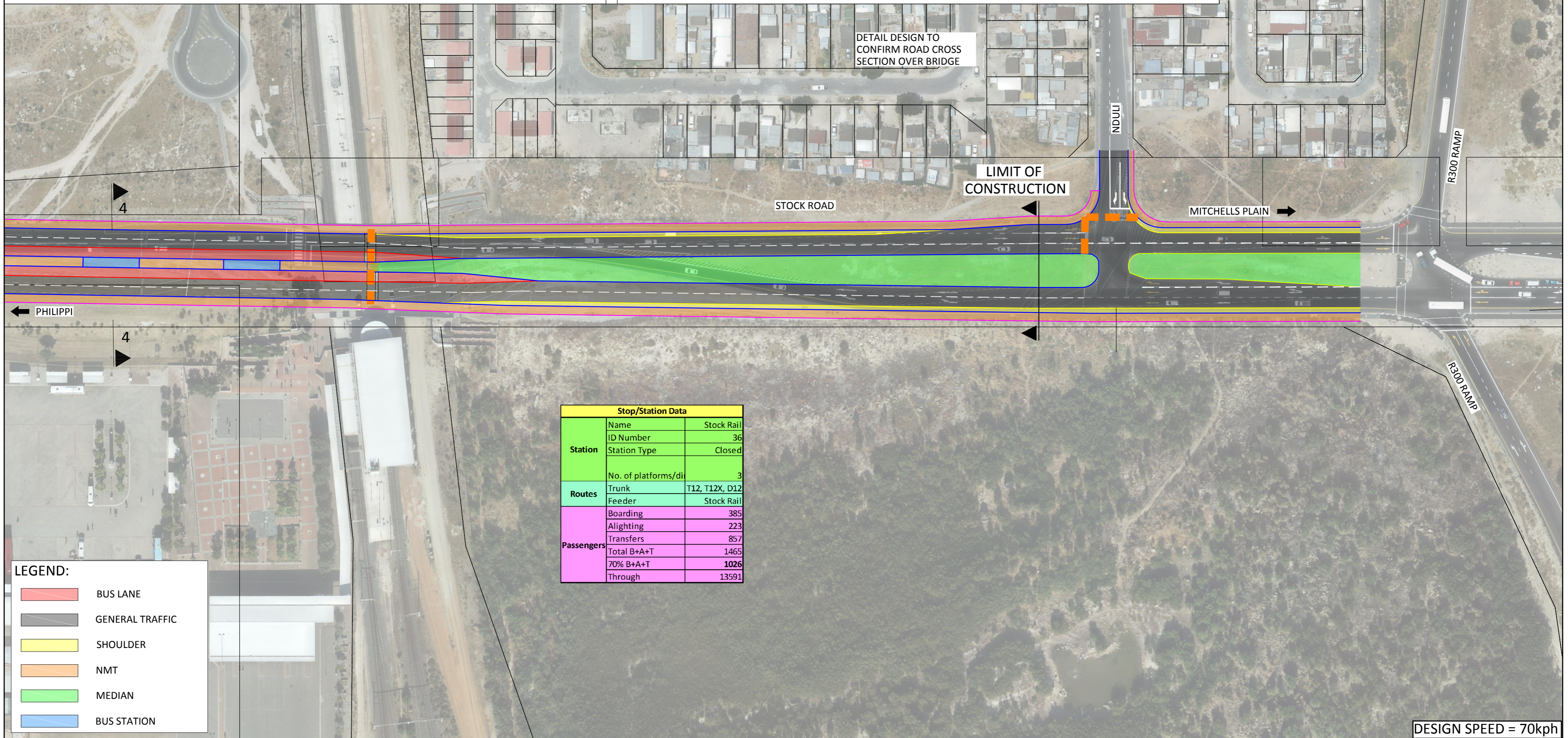


TYPICAL STOCK ROAD SECTION



SECTION 4-4



Stop/Station Data		
Station	Name	Stock Rail
	ID Number	36
	Station Type	Closed
Routes	No. of platforms/di	3
	Trunk	T12, T12X, D12
Passengers	Feeder	Stock Rail
	Boarding	385
	Alighting	223
	Transfers	857
	Total B+A+T	1465
	70% B+A+T	1026
Through	13591	

**LEGEND:**

	BUS LANE
	GENERAL TRAFFIC
	SHOULDER
	NMT
	MEDIAN
	BUS STATION

DESIGN SPEED = 70kph

NO	DATE	DESCRIPTION	CHECK	APP.
02	30-04-2015	Bus Station relocated north of railway line as per Client. Station data added.	SP	
01	20-02-2015	Bus Station added south of railway line.	SP	

SURVEYED	
DESIGNED	SP
DRAWN	YW
CHECKED	SP
APPROVED	CHIEF ENGINEER

MELISSA WHITEHEAD COMMISSIONER : TRANSPORT FOR CAPE TOWN	
DAVE. HUGO DIRECTOR: INFRASTRUCTURE	MADDIE MAZAZA DIRECTOR: PLANNING
RON HAIDEN Pr Eng. MANAGER: PUBLIC TRANSPORT INFRASTRUCTURE	GERSHWIN FORTUNE MANAGER: SYSTEM PLANNING & MODELLING

**CITY OF CAPE TOWN**

IRT: CONSTRUCTION OF PUBLIC TRANSPORT INFRASTRUCTURE FOR PHASE 2a LANSDOWNE - WETTON CORRIDOR STOCK ROAD - STOCK ROAD STATION TO R300	
SCALE 1:1000	DISCIPLINE: CE = CIVIL ENG. ARC = ARCHITECT EE = ELEC. ENG
SHEET A2	INFRA. TYPE: ST = BUS STOP S = STATION D = DEPOT B = BUSWAY
	PROJ. Name: IRT - 2a - B - CE - SR - 5 - S - 02
	STATUS CODES: S = SPATIAL CONCEPT T = TENDER C = CONSTRUCTION A = AS-BUILT

